



AVINTAGETHOUGHT

THE STUDIO OF ALXNDR JONES
AVINTAGETHOUGHT.COM



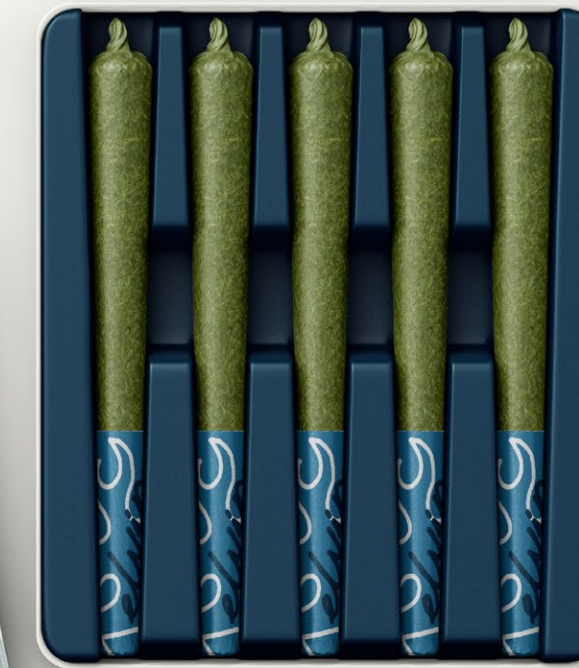
GET IN GEAR - MERCHANDISE COLLECTION

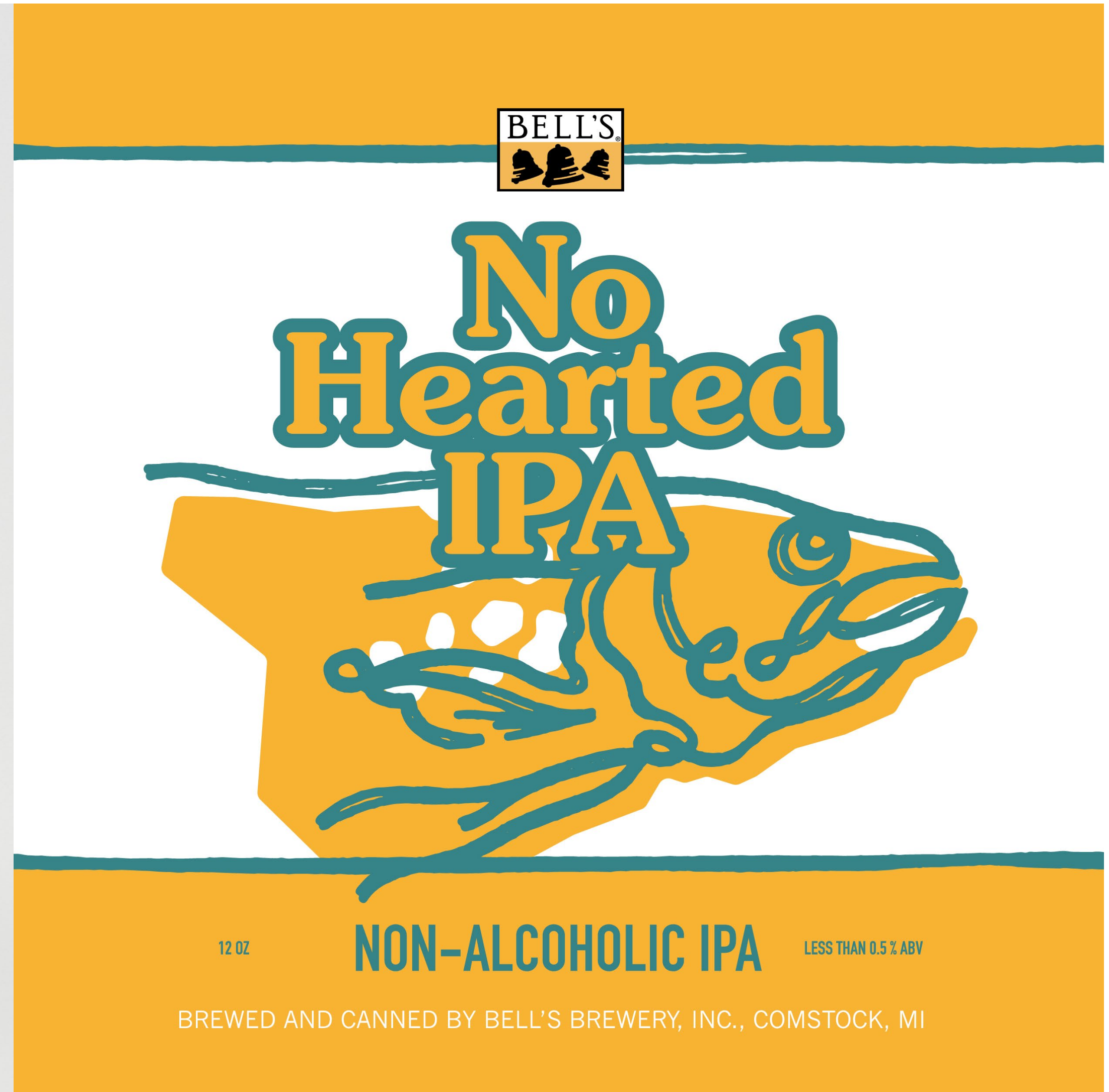


JAZZ CIGARETTES - BRAND ILLUSTRATIONS



JAZZ CIGARETTES - PACKAGING CONCEPT





BELL'S NO HEARTED IPA - PACKAGING CONCEPT





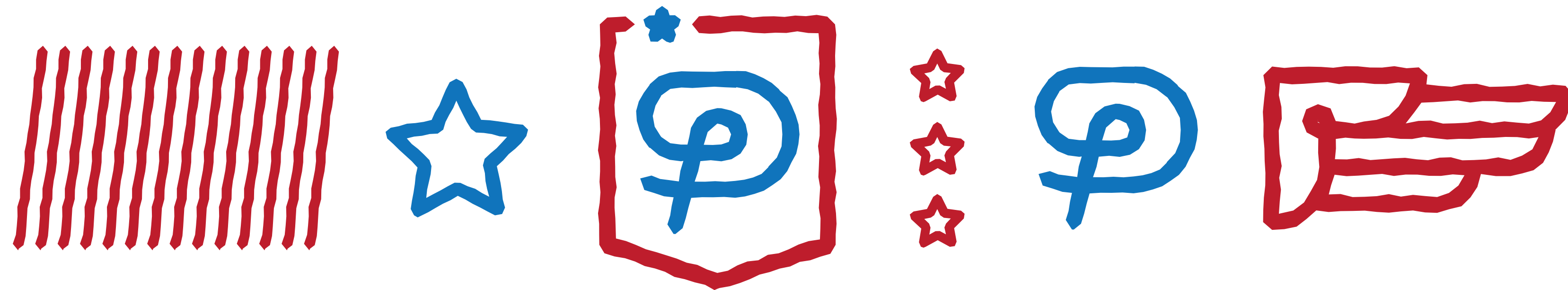
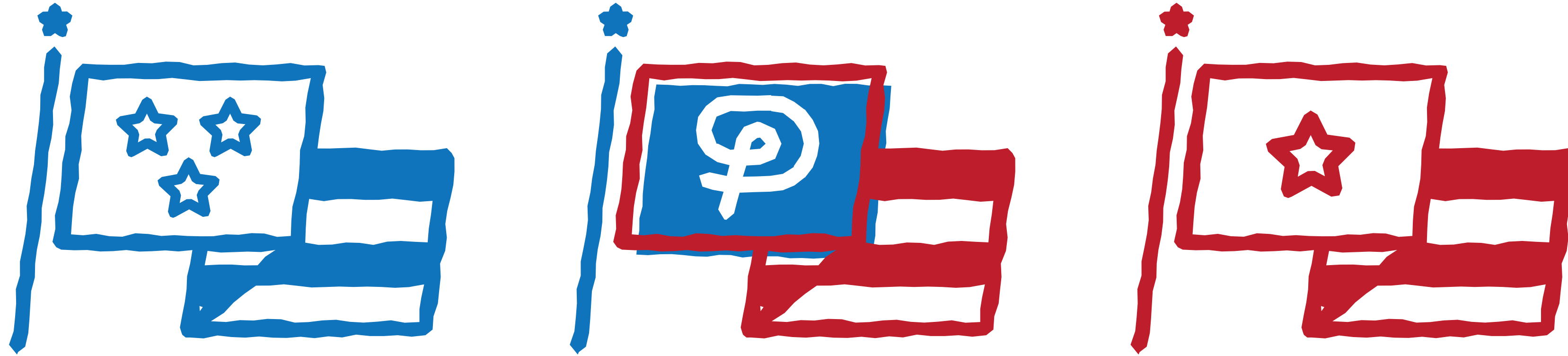
**100% Centennial.
0% Alcohol.**

BELL'S NEW NON-ALCOHOLIC IPA
CONTAINS LESS THAN 0.5% ALCOHOL BY VOLUME

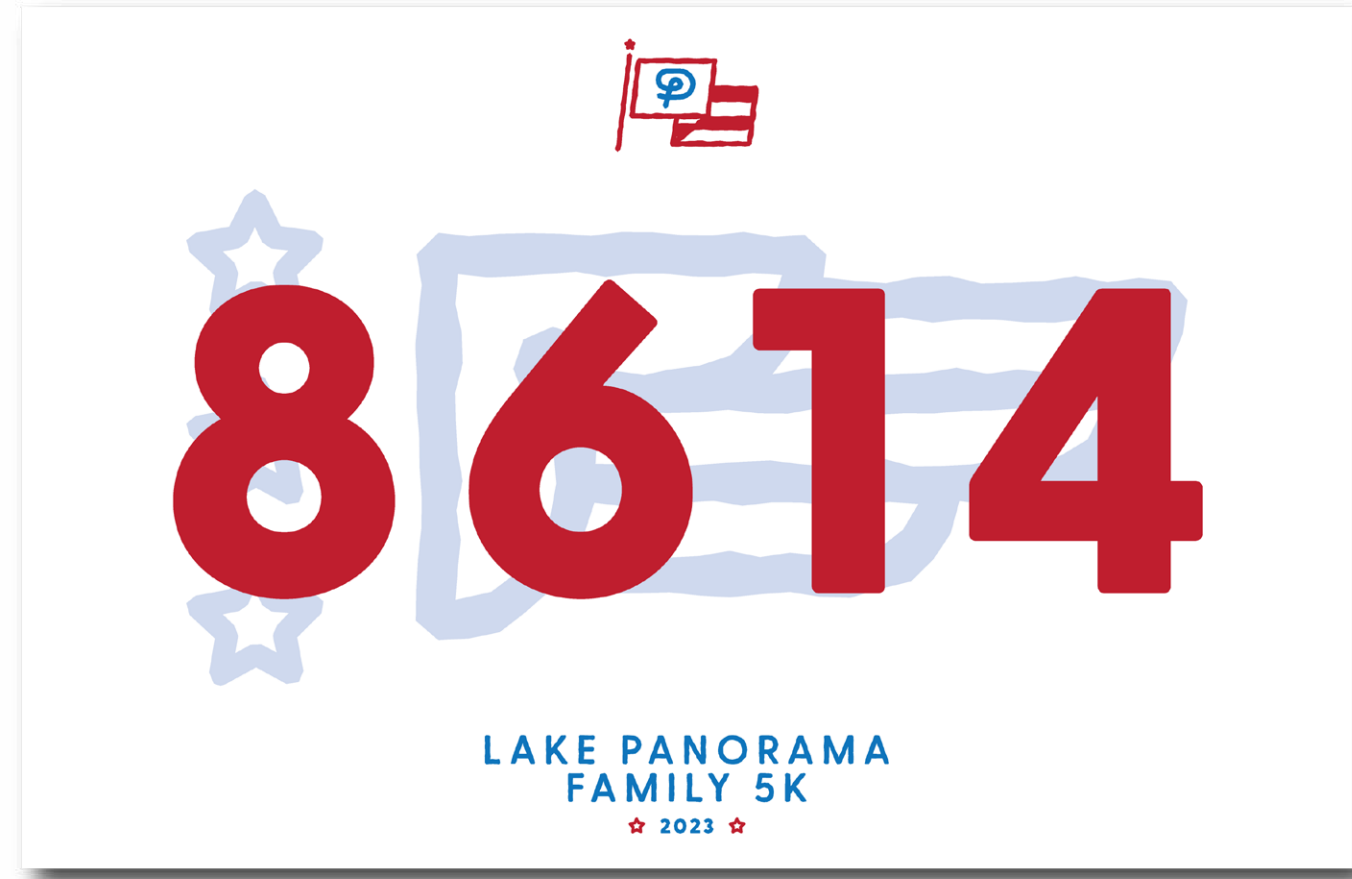
NO HEARTED IPA® AND BELL'S® ARE TRADEMARKS OF BELL'S BREWERY, INC.



LAKE PANORAMA FAMILY 5K - ICONS



LAKE PANORAMA FAMILY 5K - RACE BIBS, HAT, PARTICIPANT SHIRT



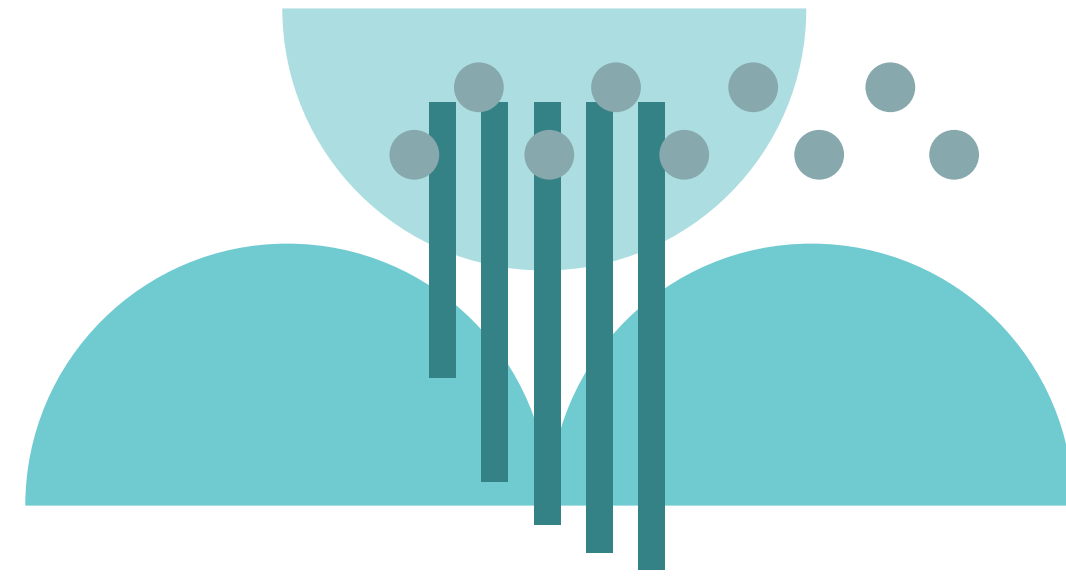
LITTLE BOX EFFECT PEDALS - '59 SOUND & LO-FI JUNKY PEDAL ILLUSTRATIONS





 PNC
WOMEN RUN
THE CITIES
PRESENTED BY
 TRIA

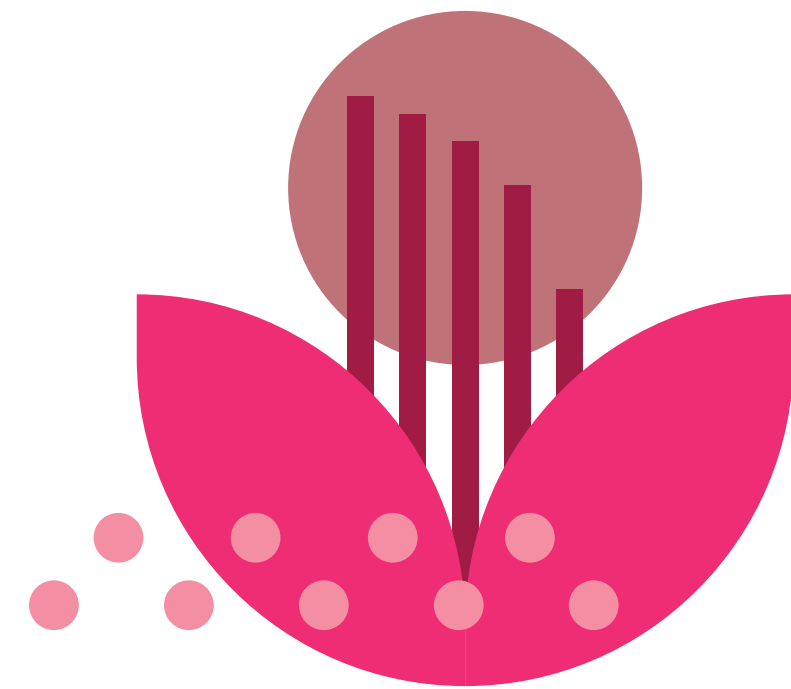
PNC WOMEN RUN THE CITIES - BRAND ICONS



'MIND'



'BODY'



'SOUL'



'MEANS'



PNC WOMEN RUN THE CITIES - PARTICIPANT GEAR, VOLUNTEER SHIRT





HALF & HALF CHALLENGE - APPAREL



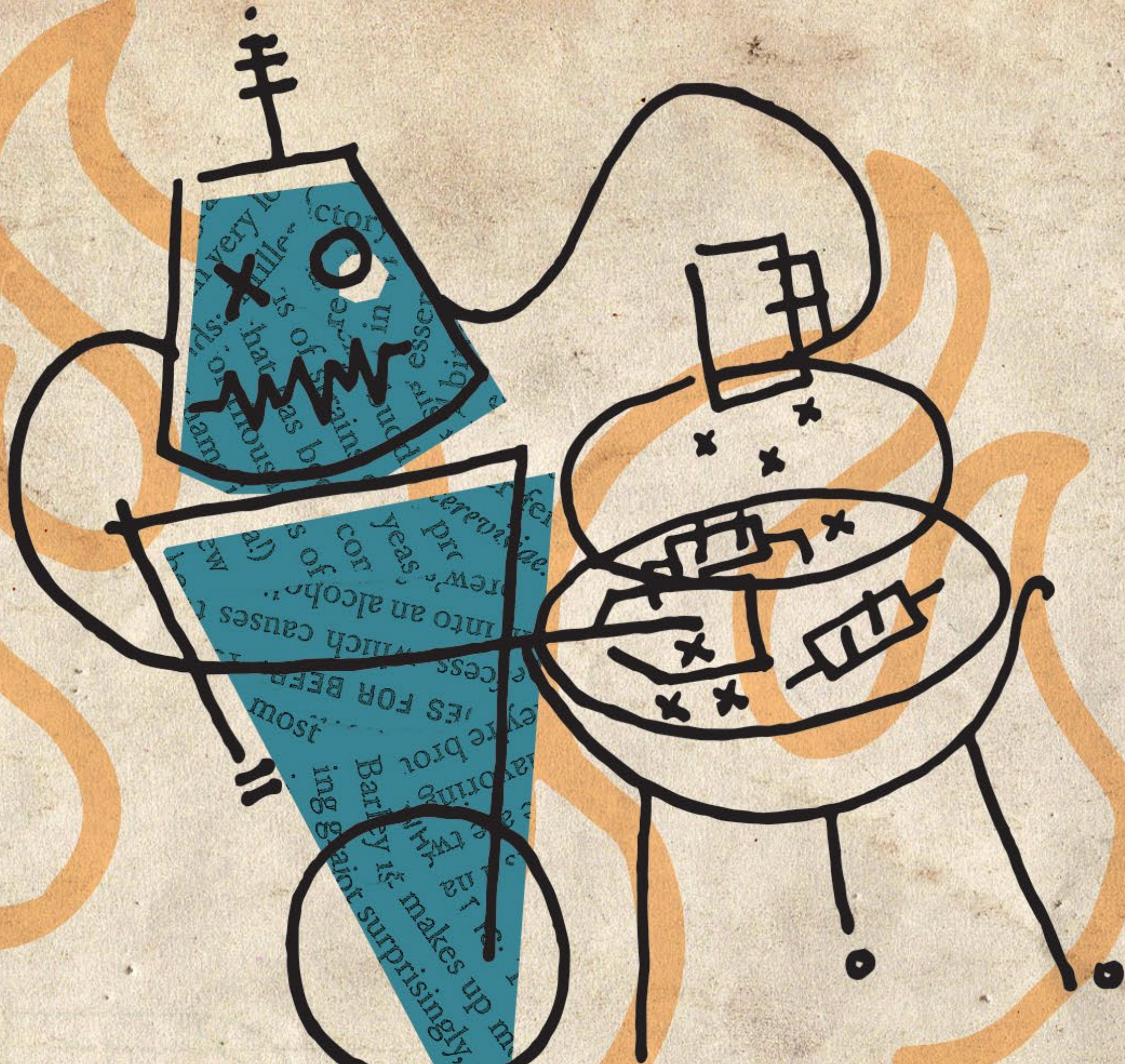


GRILLIN' SZN

A COLLABORATION
SMOKED SAISON
WITH PEACH, PEPPERCORN,
AND SALT-PACKED HOPS

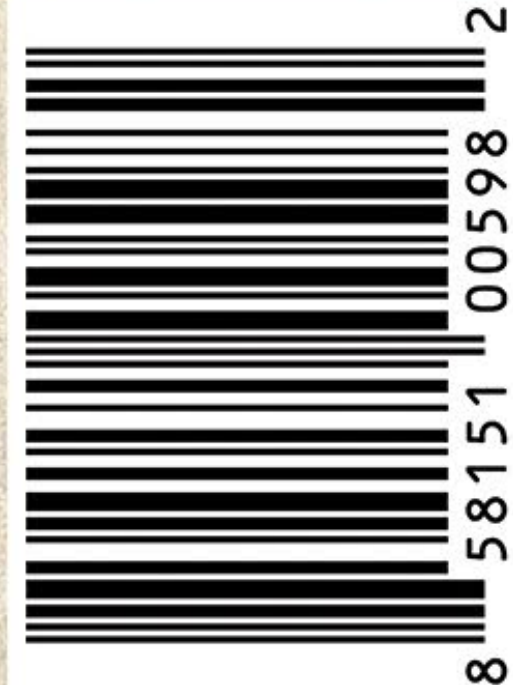


12 FL OZ · 5.6% ABV · 27.5 IBU



BREWED AND PACKAGED BY
TIN WHISKERS BREWING CO ST PAUL MN
TWBREWING.COM WOODENSHIPBREWING.COM

KEEP REFRIGERATED! DRINK FRESH!
RECYCLABLE ALUMINUM. REMOVE LABEL BEFORE RECYCLING.
GOVERNMENT WARNING: (1) ACCORDING TO THE SURGEON
GENERAL, WOMEN SHOULD NOT DRINK ALCOHOLIC BEVERAGES
DURING PREGNANCY BECAUSE OF THE RISK OF BIRTH DEFECTS.
(2) CONSUMPTION OF ALCOHOLIC BEVERAGES IMPAIRS YOUR
ABILITY TO DRIVE A CAR OR OPERATE MACHINERY, AND MAY
CAUSE HEALTH PROBLEMS.



FRESHNESS DATE!

GO SOMEWHERE UNMAPPED



1 Pint, 9.4 fl. oz.



UNMAPPED
BREWING CO.

GO SOMEWHERE UNMAPPED

Some say its an anagram for Citra & Mosaic. Others say its the beer of choice for interstellar royalty. We just think its a delicious sessionable pale ale!

Cosmic Tiara is a delectable new addition to our year-round beer lineup. Subtle malt notes pair with a cascade of juicy and citrus fruit flavors that derive from healthy helpings of Citra and Mosaic hops.

Get ready to blast off- and don't forget the headgear!

TRY OUR FLAGSHIP BEERS!

NO TRACE IPA **TOPOWIT** saison AMELIE

UNMAPPEDBREWING.COM

BREWED AND CANNED BY UNMAPPED BREWING COMPANY
14625 EXCELSIOR BOULEVARD MINNETONKA, MN

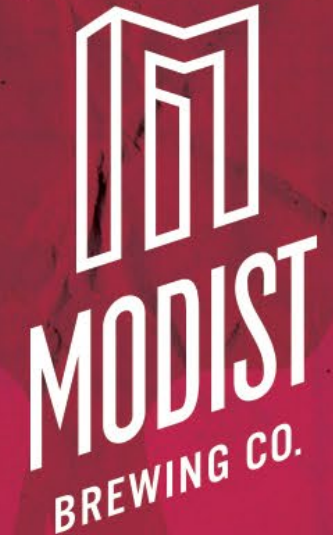
GOVERNMENT WARNING: (1) According to the Surgeon General, women should not drink alcoholic beverages during pregnancy because of risk of birth defects. (2) Consumption of alcoholic beverages impairs your ability to drive a car or operate machinery, and may cause health problems.





GOVERNMENT WARNING: (1) ACCORDING TO THE SURGEON GENERAL, WOMEN SHOULD NOT DRINK ALCOHOLIC BEVERAGES DURING PREGNANCY BECAUSE OF THE RISK OF BIRTH DEFECTS; (2) CONSUMPTION OF ALCOHOLIC BEVERAGES IMPAIRS YOUR ABILITY TO DRIVE A CAR OR OPERATE MACHINERY AND MAY CAUSE HEALTH PROBLEMS.

DANGEROUS MAN BREWING CO. 1300 2ND STREET NE MINNEAPOLIS, MN 55413
 IPA with lemons, raspberries and citra. Brewed in collaboration with our family and friends at Modist Brewing Co.

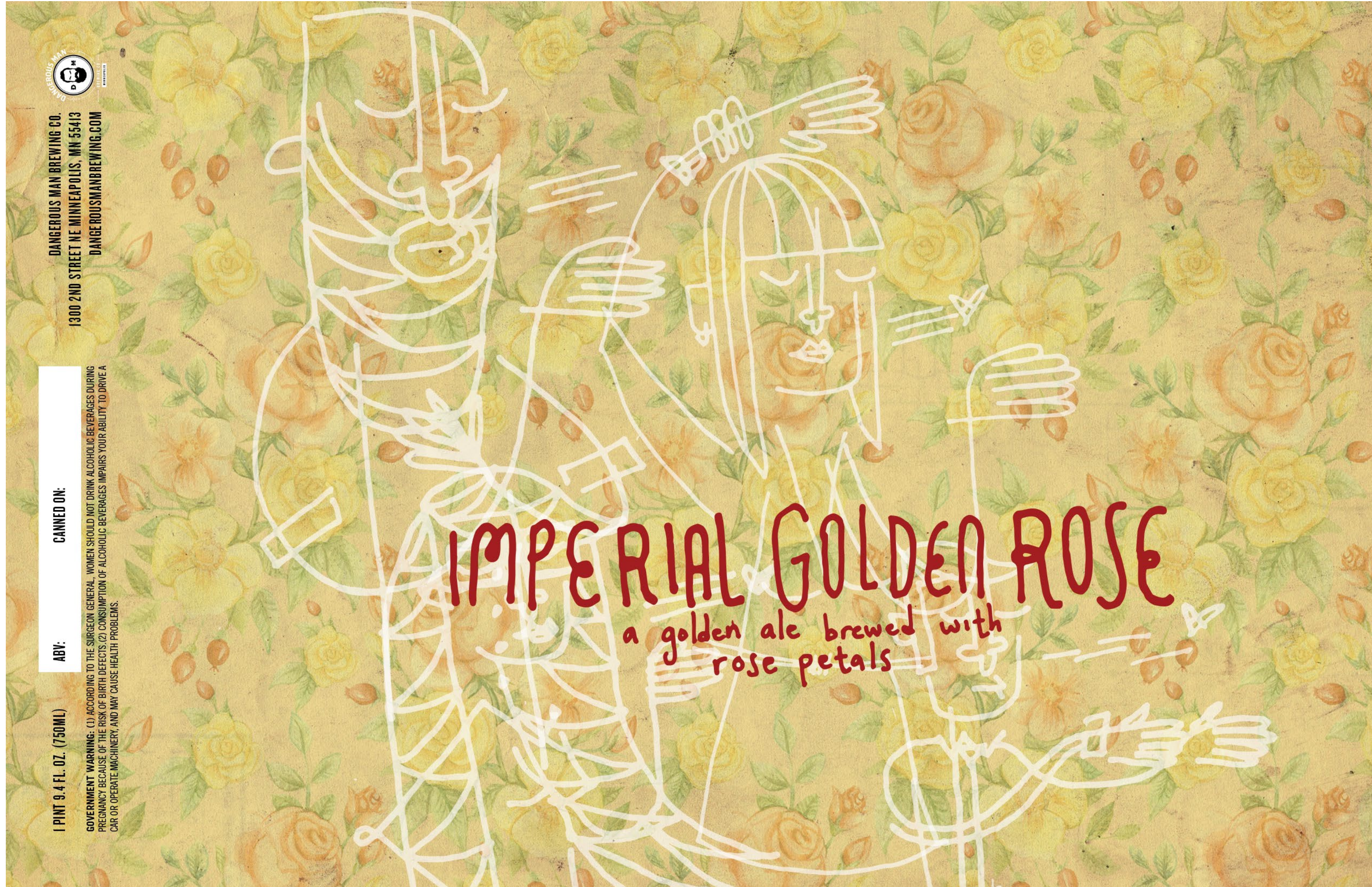


LEMONGRAB
 PINK LEMONADE IPA

5.5% ABV

CROWLER®

750 ML



1 PINT 9.4 FL. OZ. (750ML)

ABV:

CANNED ON:

DANGEROUS MAN BREWING CO.
1300 2ND STREET NE MINNEAPOLIS, MN 55413
DANGEROUSMANBREWING.COM



GOVERNMENT WARNING: (1) ACCORDING TO THE SURGEON GENERAL, WOMEN SHOULD NOT DRINK ALCOHOLIC BEVERAGES DURING PREGNANCY BECAUSE OF THE RISK OF BIRTH DEFECTS. (2) CONSUMPTION OF ALCOHOLIC BEVERAGES IMPAIRS YOUR ABILITY TO DRIVE A CAR OR OPERATE MACHINERY, AND MAY CAUSE HEALTH PROBLEMS.

IMPERIAL GOLDEN ROSE

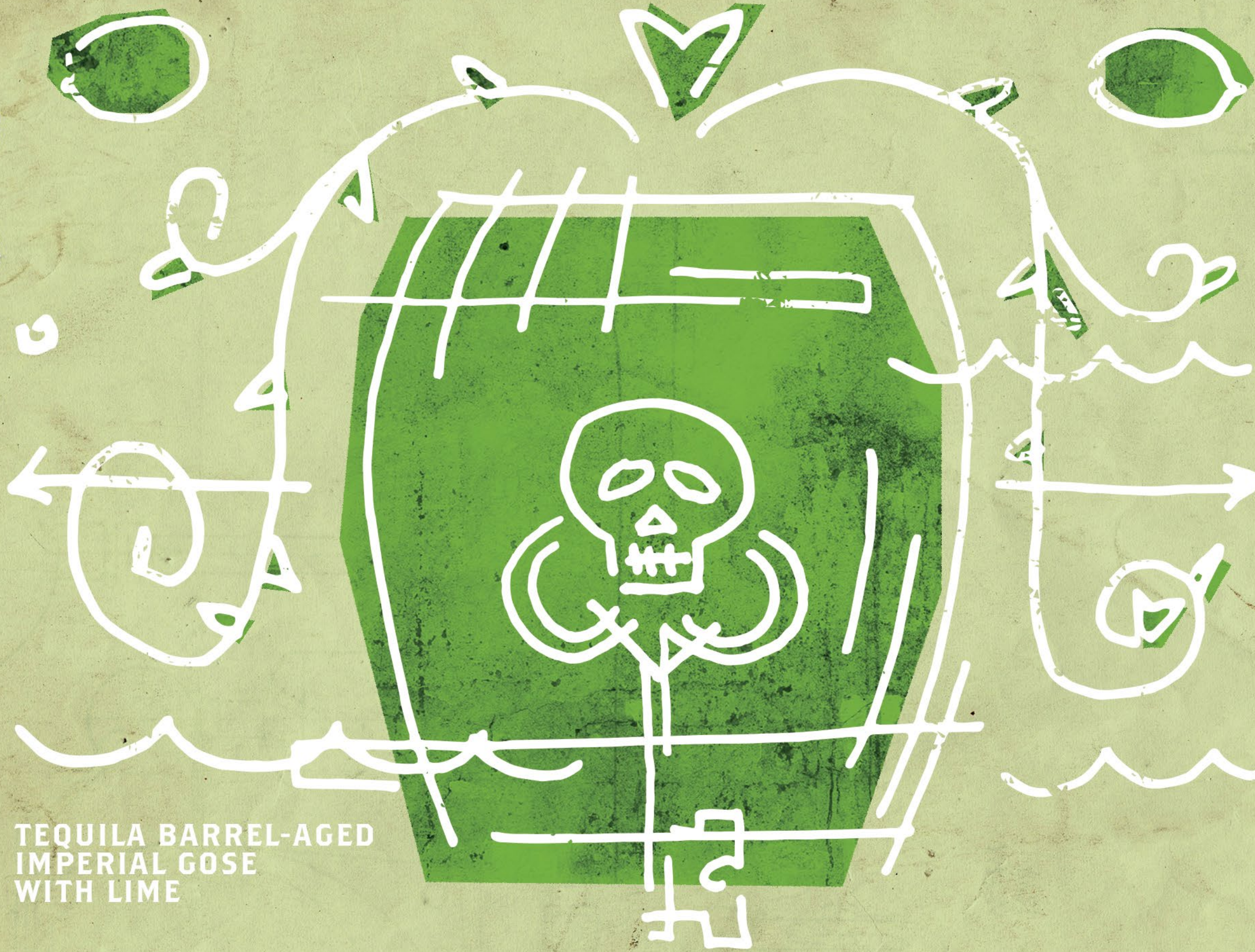
a golden ale brewed with
rose petals

GOVERNMENT WARNING: (1) ACCORDING TO THE SURGEON GENERAL, WOMEN SHOULD NOT DRINK ALCOHOLIC BEVERAGES DURING PREGNANCY BECAUSE OF THE RISK OF BIRTH DEFECTS. (2) CONSUMPTION OF ALCOHOLIC BEVERAGES IMPAIRS YOUR ABILITY TO DRIVE A CAR OR OPERATE MACHINERY, AND MAY CAUSE HEALTH PROBLEMS.

DANGEROUS MAN BREWING CO. 1300 2ND STREET NE. MINNEAPOLIS, MN 55413

DANGEROUSMANBREWING.COM

TEQUILA BARREL-AGED
IMPERIAL GOSE
WITH LIME



WE HAVE AGED
THIS IMPERIAL
GOSE FOR THE
PERFECT
AMOUNT OF
TIME AND NOW
IT IS READY
FOR YOUR
ENJOYMENT.
PLEASE DON'T
CELLAR THIS
BEER. GET IT IN
YOUR FRIDGE
AND THEN IN A
GLASS!

9.3%
ABV

CROWLER®

750 ML

SOBER DAD CREW - PODCAST REBRAND. VARIOUS MERCHANDISE





DICK'S SPORTING GOODS TURKEY DAY 5K - PARTICIPANT SHIRT, MISC BRAND APPLICATIONS, PARTICIPANT MEDAL

